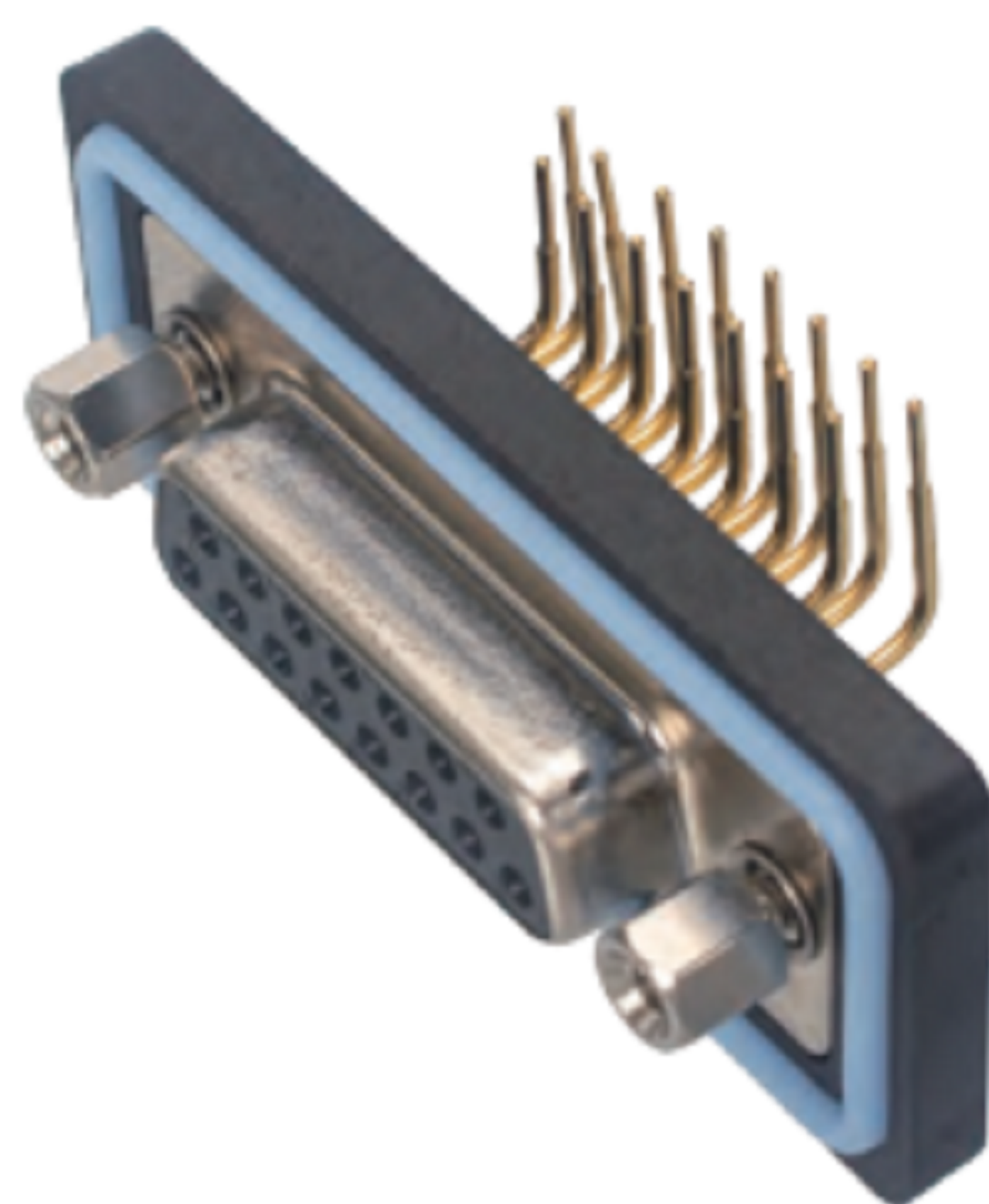


弯式孔型插座(焊板式)  
EDB2 Curved Female Socket(PCB)  
EDB2 - F 15 - PPL 14

芯数:  
15  
26H  
3W3  
3W3C  
7W2  
11W1

大针线规:  
14:14AWG  
10:10AWG  
08:8AWG  
06:6AWG(默认)  
空:小针



产品参数 PRODUCT PARAMETERS

额定电流 Rated current	10A/20A/30A/40A	插拔力 Plug and unplug force	符合IEC60807-3
额定电压 Rated voltage	1000 V	接线范围 Wire bound	8mm~14mm
耐电压 Withstand Voltage	500 V	插拔次数 Durability	≥500次(Cycles)
绝缘阻抗 Insulation resistance	5000 MΩ	适用温度 Applicable temperature	-55°C ~ +105°C
接触阻抗 Contact resistance	10 mΩ	防水等级 Waterproof grade	IP65/IP67

东莞市高迪电子有限公司  
DONG GUAN GAO DI ELECTRONICS CO., LTD

TOLERANCE UNLESS OTHERWISE STATED:  
Up to 5 ±0.2  
Above 5 ~ 15 ±0.3  
Above 15 ~ 30 ±0.4  
Above 30 ~ 50 ±0.5  
Angle ±0.3°

3RD. ANGEL'S

UNITS MM

DRAWN BY:	DATE	MAT'L	TITLE	CONNECTOR
Jack Lu	12/13/19			
CHECKED BY:	DATE	FINISH	MODLE	EDB2 - F 15 - PPL 14
Jacky Chen	12/13/19			
APPROVED BY:	DATE	SCALE	DWG NO.	
Tony Kao	12/13/19	1 : 1		
		SHEET NO.	PART NO.	
		1 of 1		

ITEM NO.	DESCRIPTION	DRAWN	DATE

SIZE  
A4  
VER  
R1